

open ARCHITECTURAL  
WINDOWS & DOORS



# Entry Doors

Wood, Cladded Wood & Steel Systems



# CONTENTS

## 1 SYSTEMS

Open AWD WOOD . . . . .	4
Open AWD CLADDED WOOD . . . . .	6
Open AWD BRONZE . . . . .	7
CORTIZO ALUMINUM . . . . .	9
REYANERS ALUMINUM . . . . .	10
FORSTER STEEL . . . . .	11
OTTOSHTUMM STEEL . . . . .	12
SECCO OS STEEL . . . . .	13
SECCO EBE STEEL . . . . .	14
TRESHOLD . . . . .	15

## 2 MATERIALS & COATINGS

MATERIALS . . . . .	16
POWDER COATING . . . . .	17
VEROMETAL COATING . . . . .	18
CORTEN . . . . .	19

## 3 HARDWARE

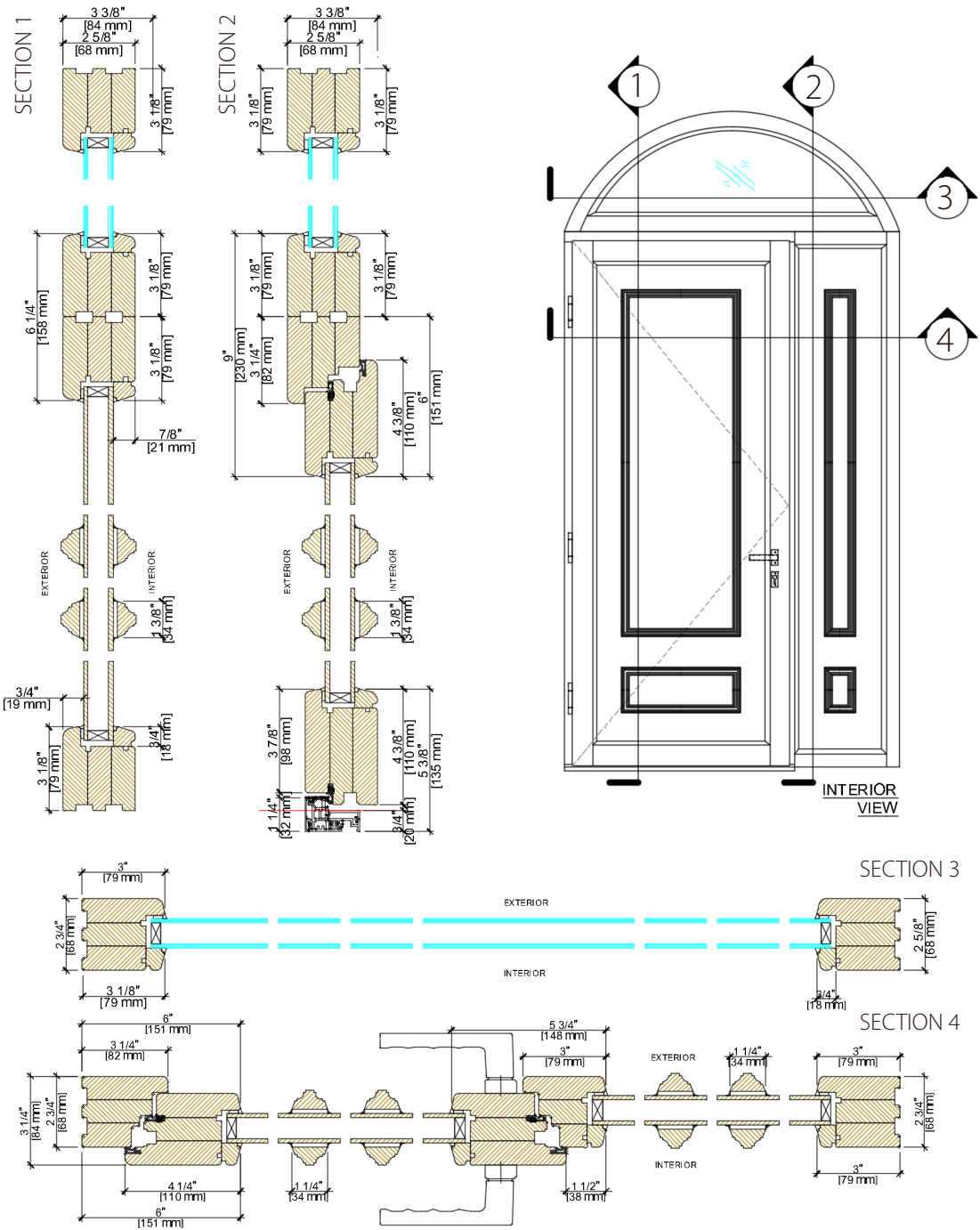
STANDARD HANDLES . . . . .	20
PREMIUM HANDLES . . . . .	21
HINGES . . . . .	22
LOCKS & DRIVES . . . . .	23
CONTACTS . . . . .	24

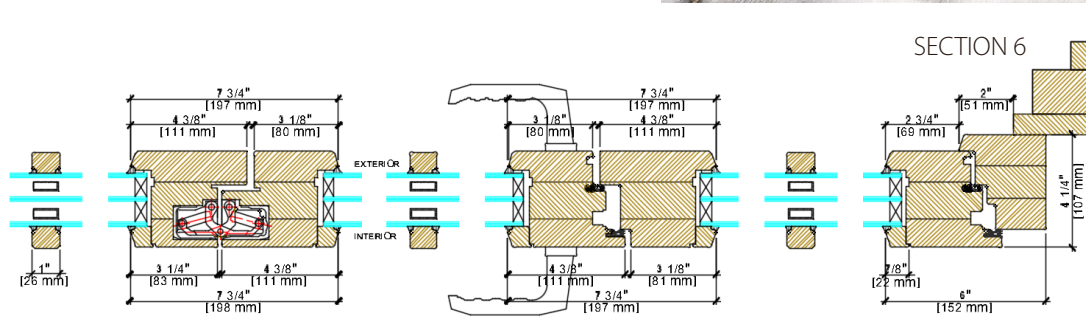
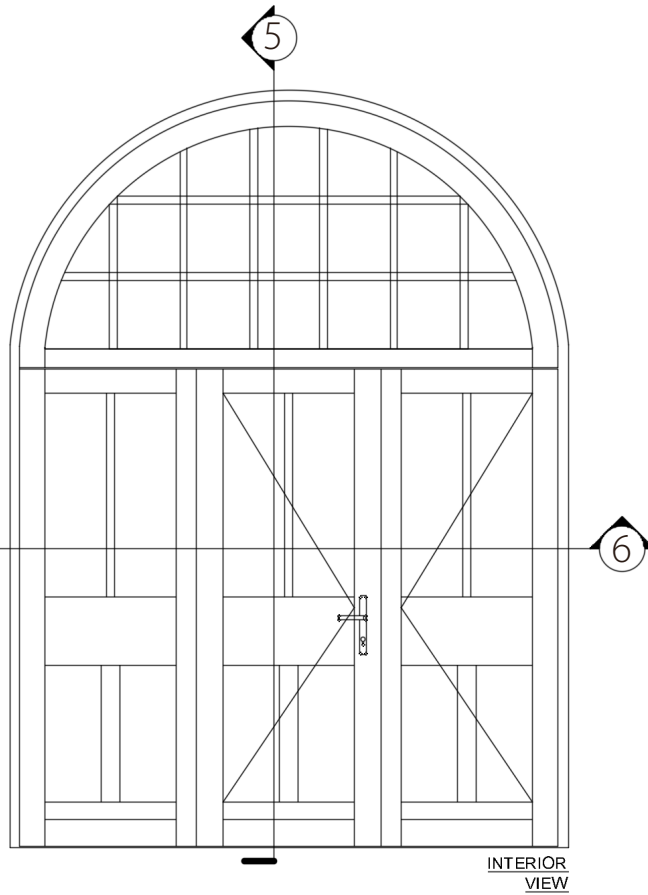
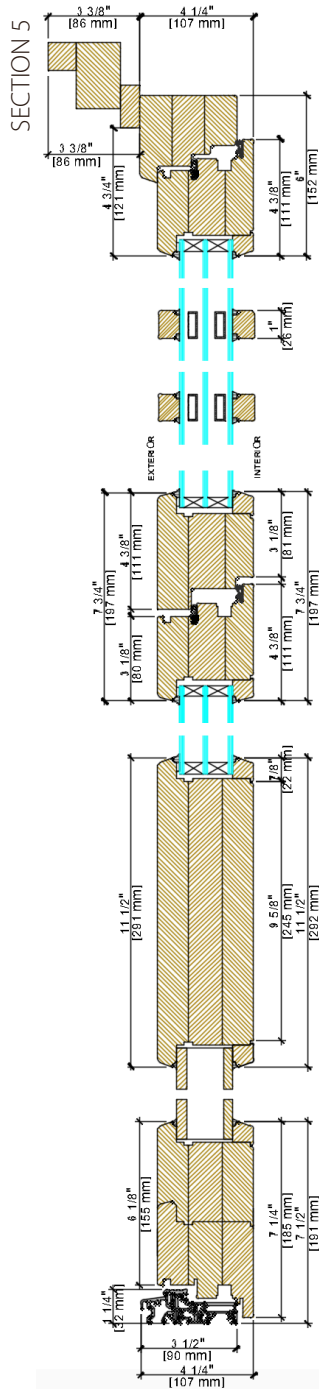




Entry doors are engineered for both security and aesthetic appeal, often featuring robust construction and decorative elements not typically found in interior doors. Unlike interior doors, entry doors must withstand external factors like weather and potential intruders, necessitating specialized materials and designs for enhanced durability and protection. Additionally, entry doors serve as the focal point of a building's facade, making a statement about the owner's taste and inviting guests inside with a sense of welcome and security.

The Open AWD Team will help you create a unique design and manufacture custom doors to meet all of the needs of even the most daring and challenging projects.

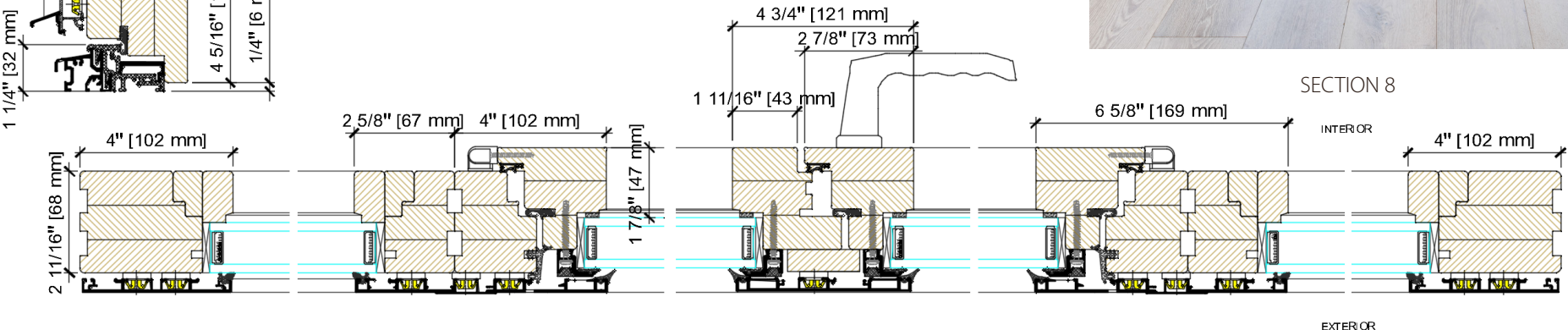
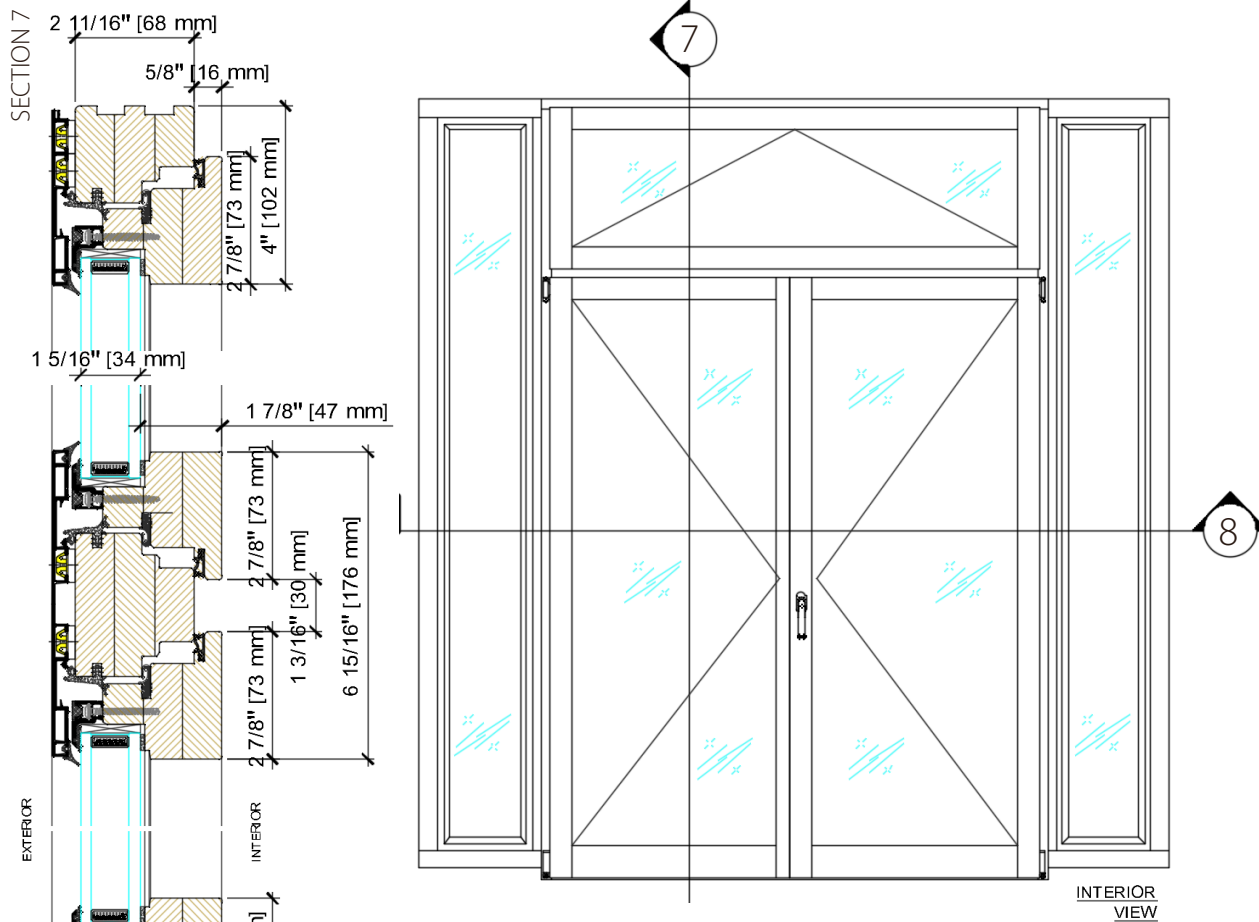




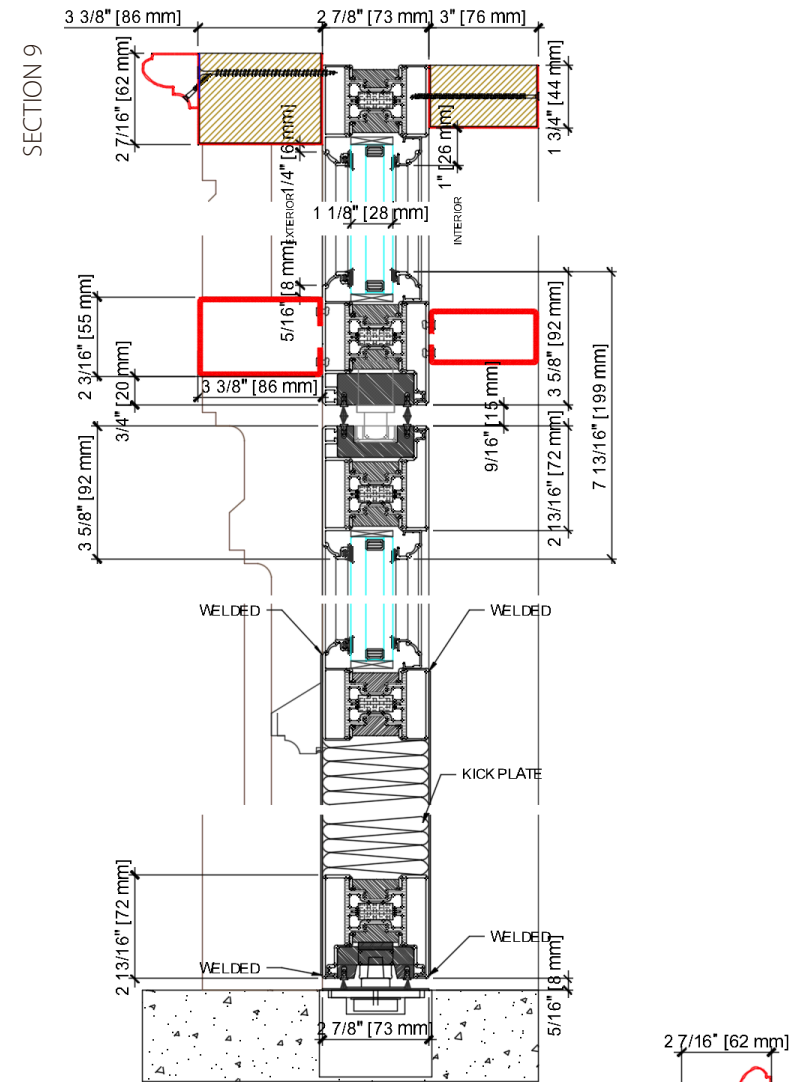
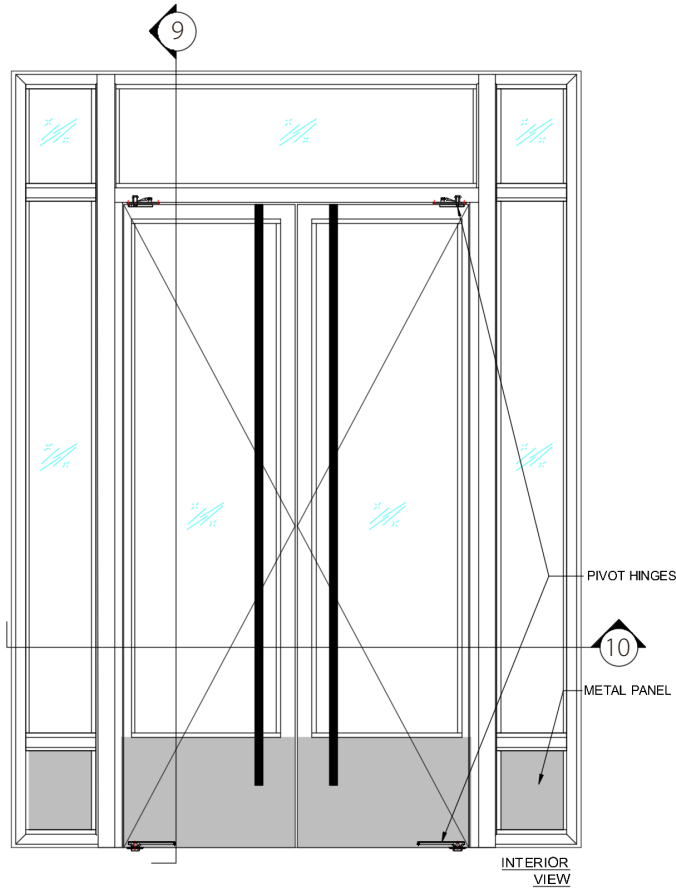


SYSTEM

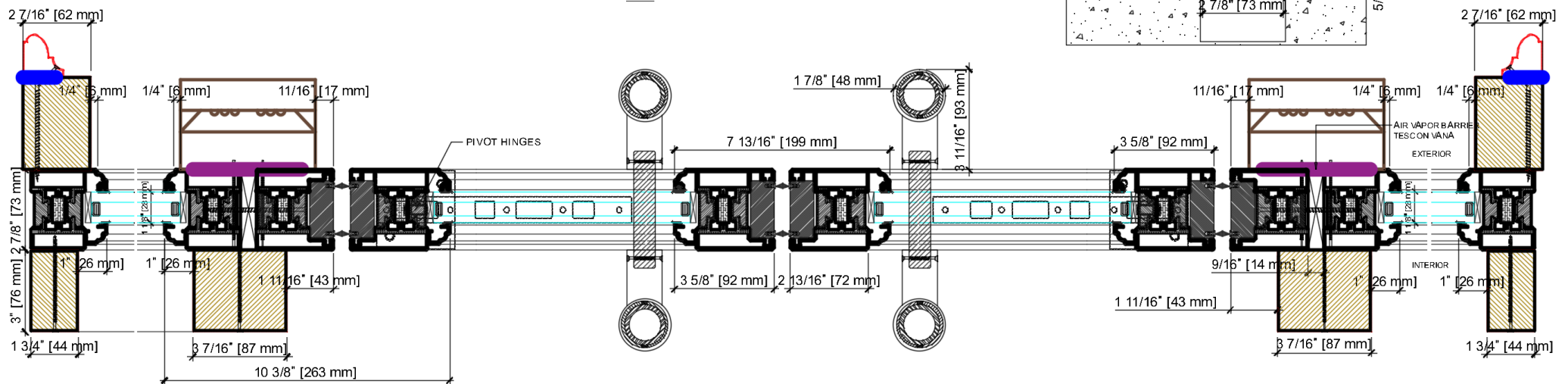
# Open AWD CLADDED WOOD







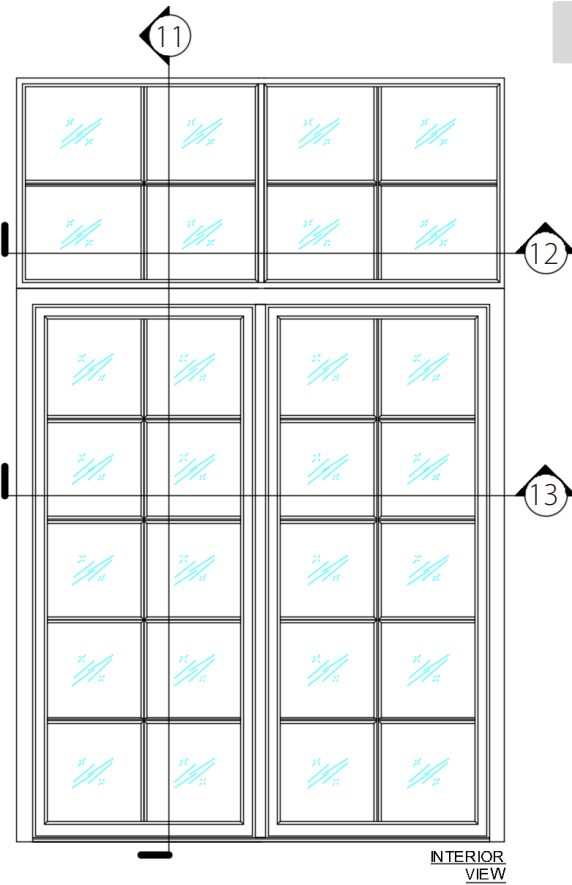
SECTION 10



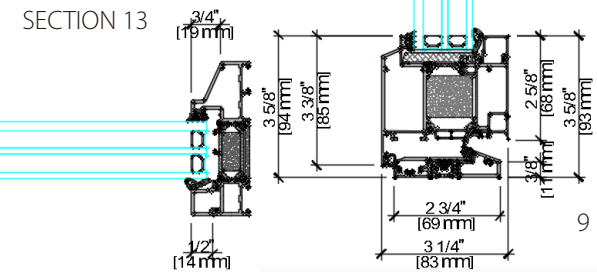
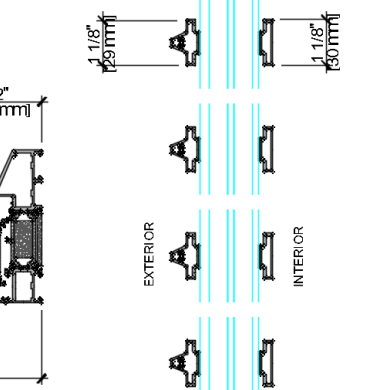
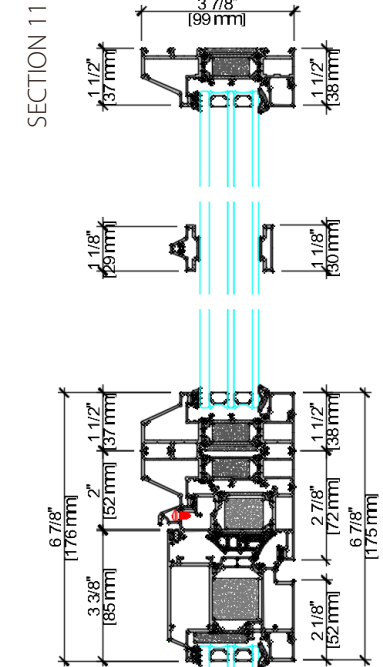
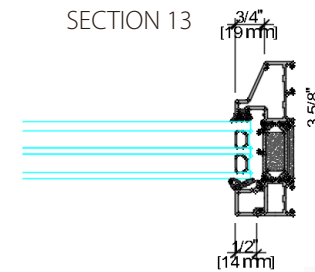
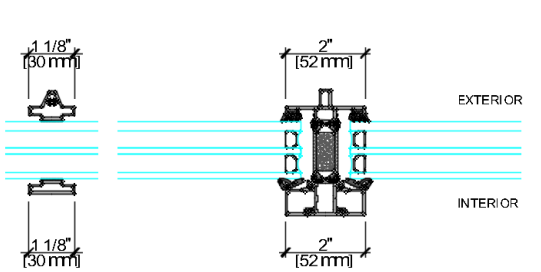
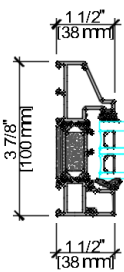
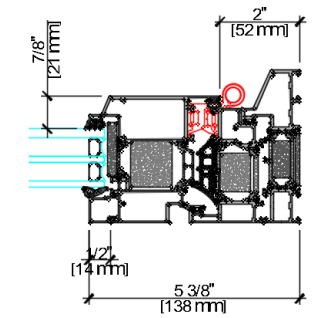
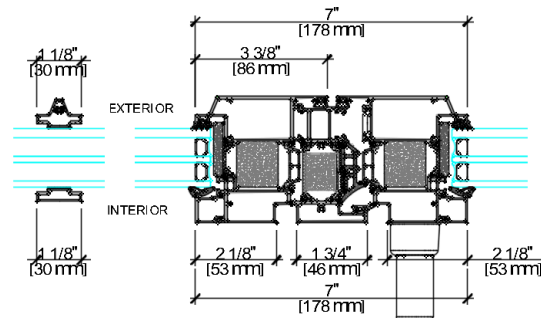
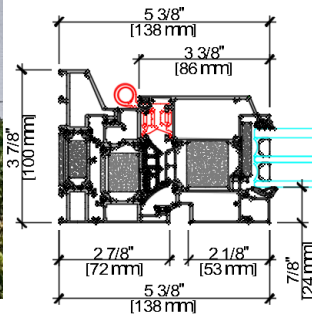


# CORTIZO ALUMINUM

# SYSTEM



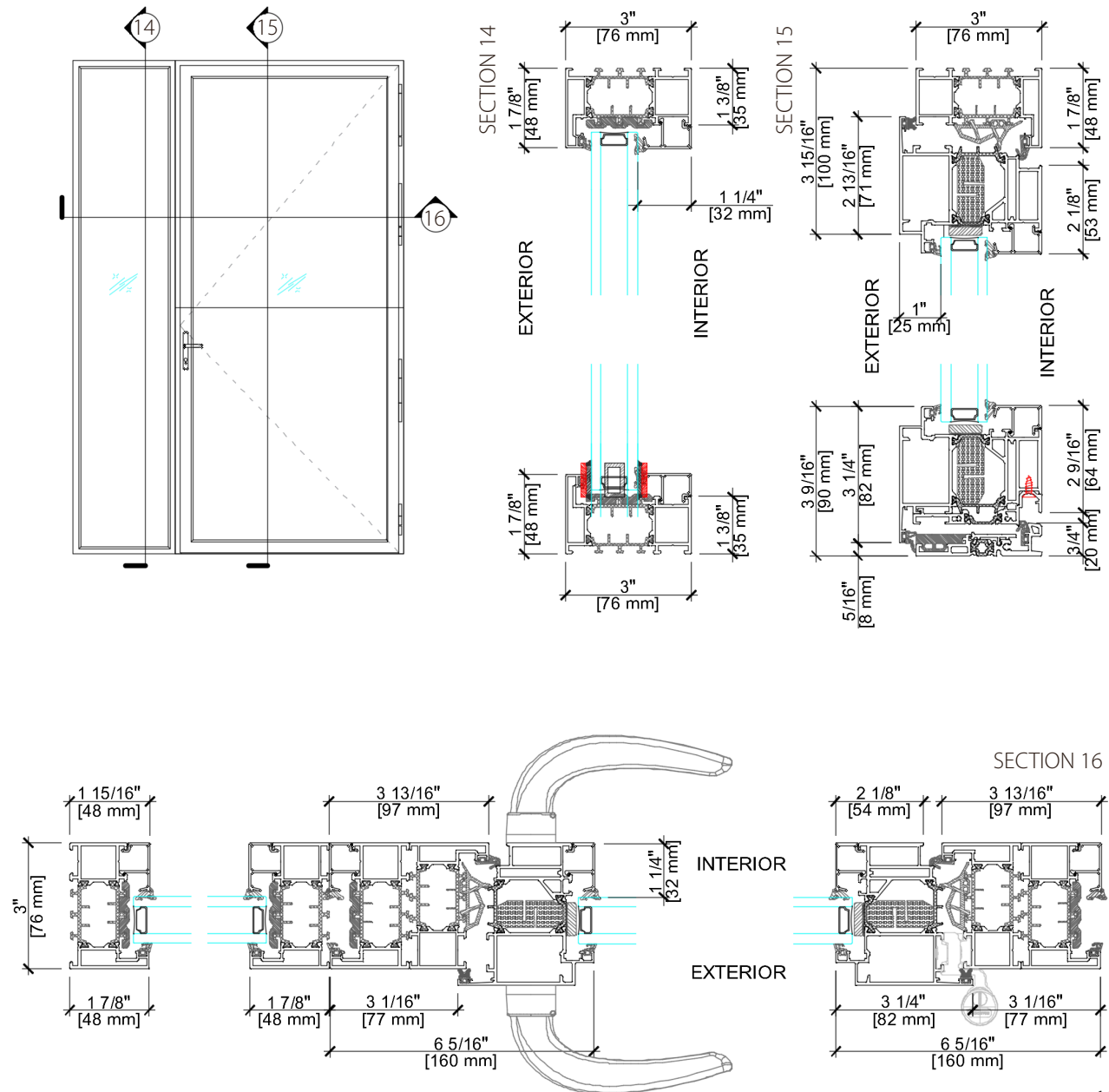
INTERIOR VIEW



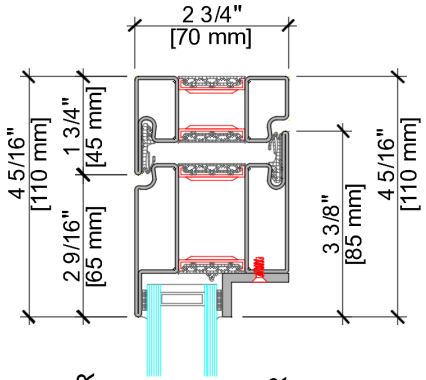


# REYANERS ALUMINUM

# SYSTEM

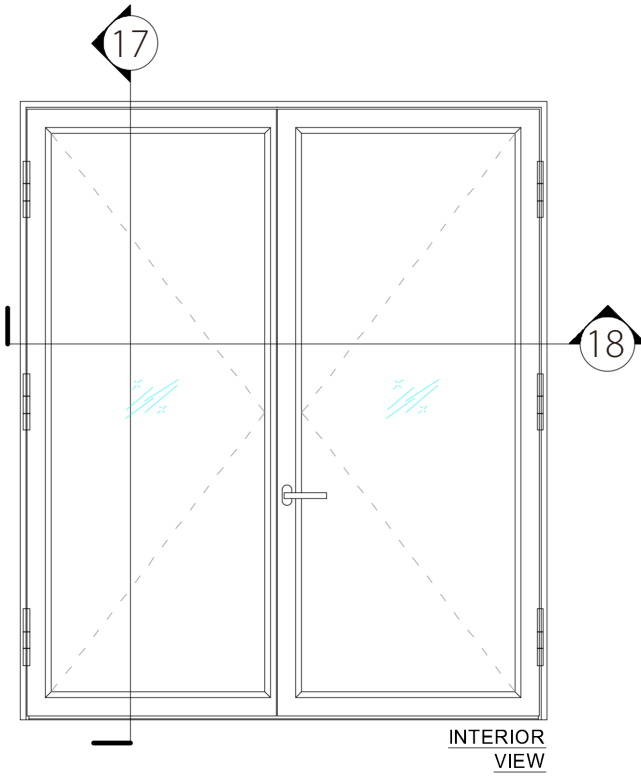
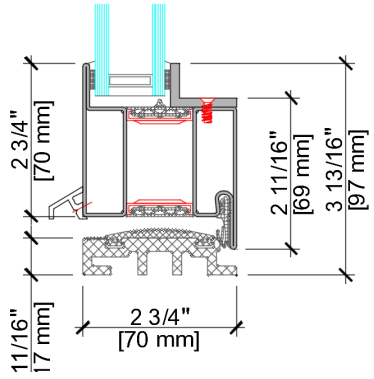


SECTION 17



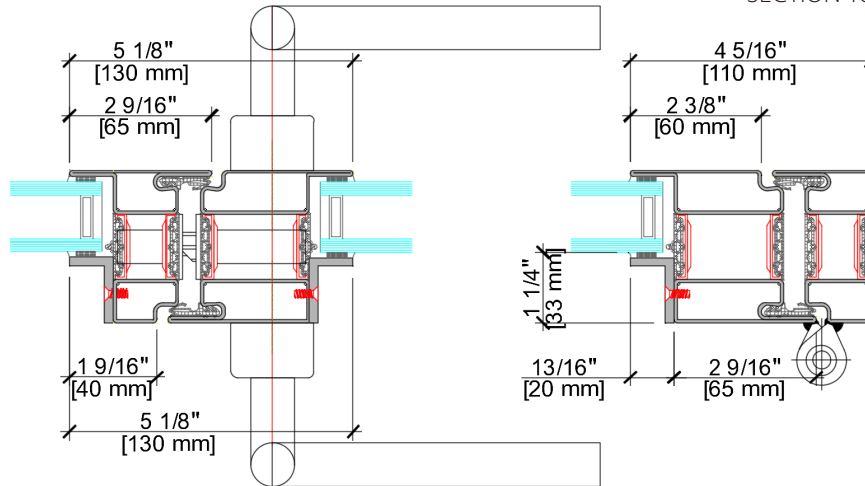
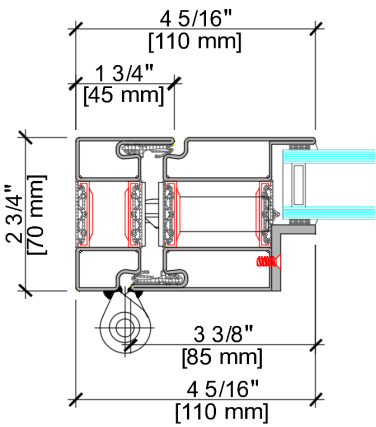
EXTERIOR

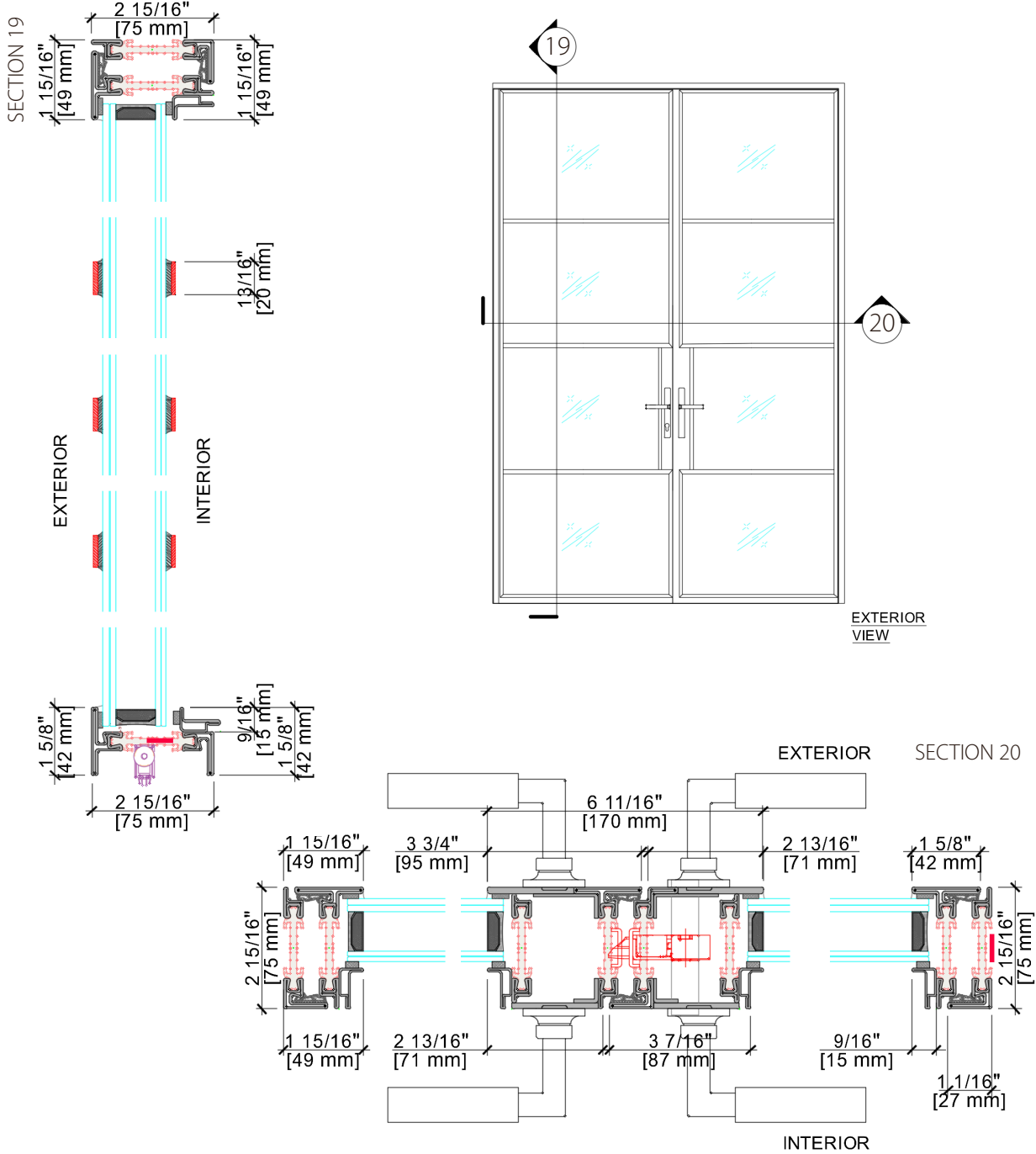
INTERIOR



18

SECTION 18



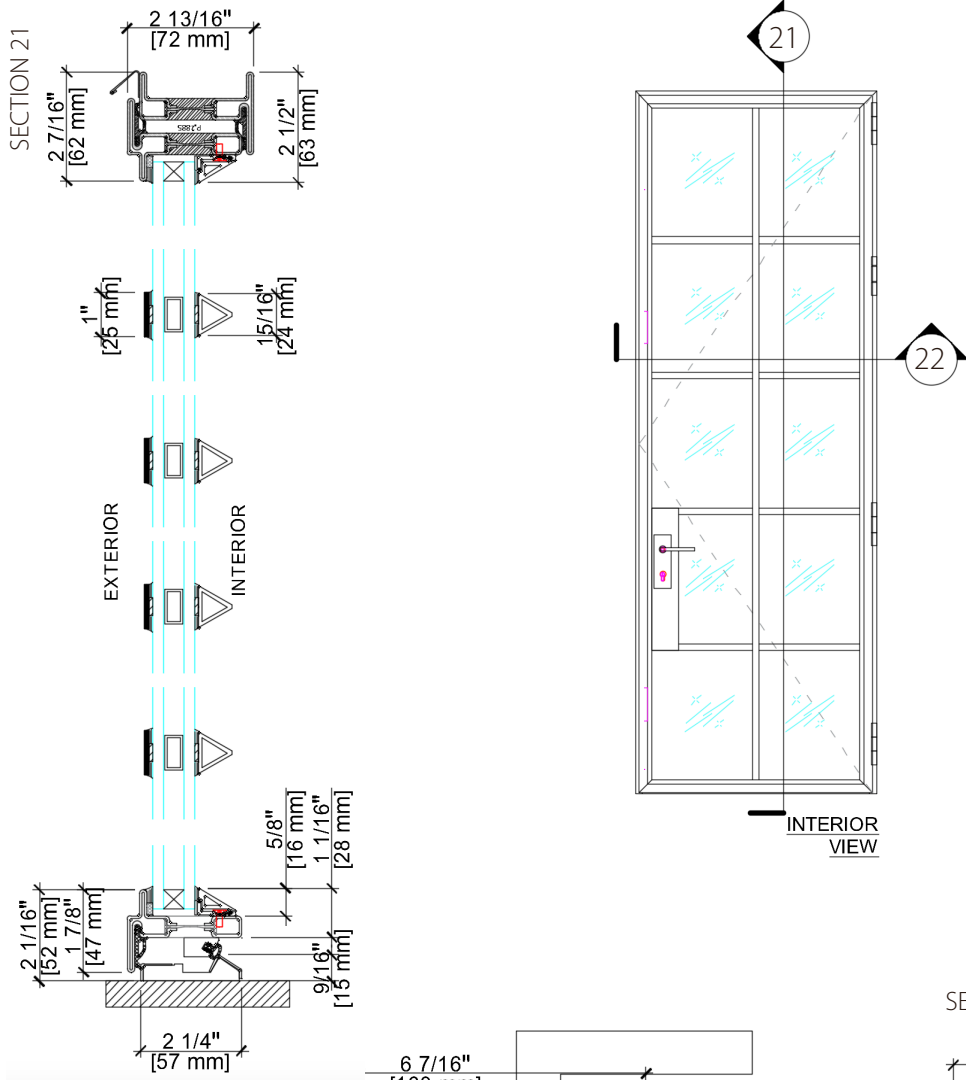




SYSTEM

# SECCO OS STEEL

SECTION 21

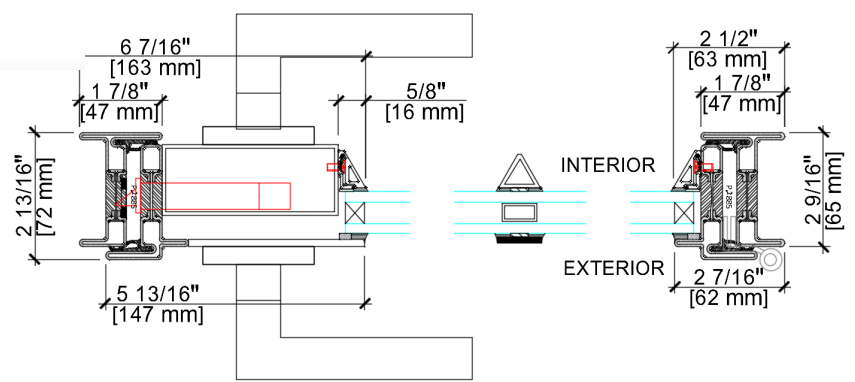


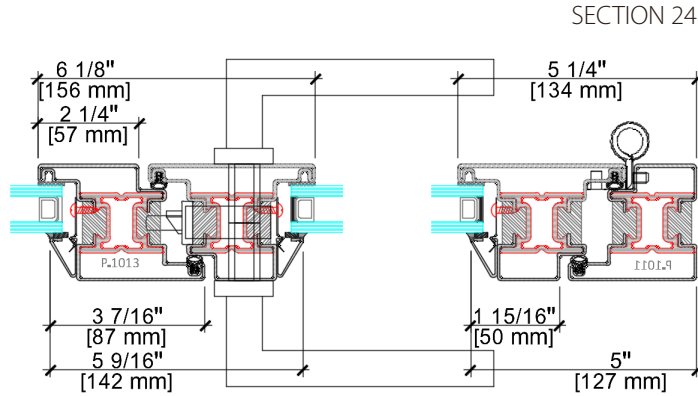
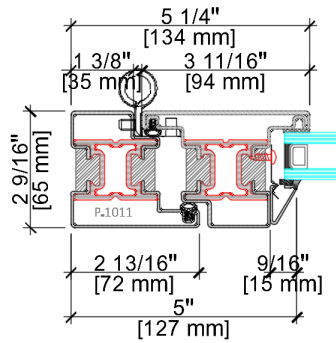
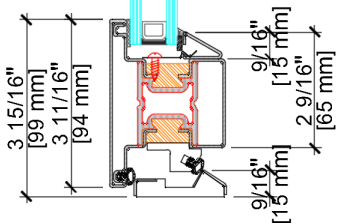
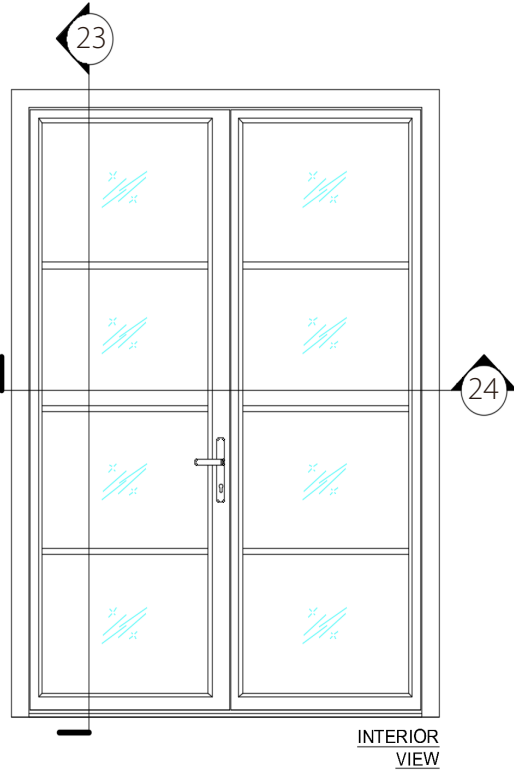
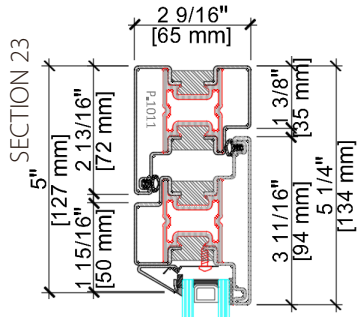
21

22

INTERIOR VIEW

SECTION 22





### 1 Low Profile Threshold

Our low-profile threshold, which is completely flush with the floor, makes crossing the threshold more convenient and safer, which is especially important for people with disabilities and for use in public buildings.

### 3 Sealing and Moisture Protection

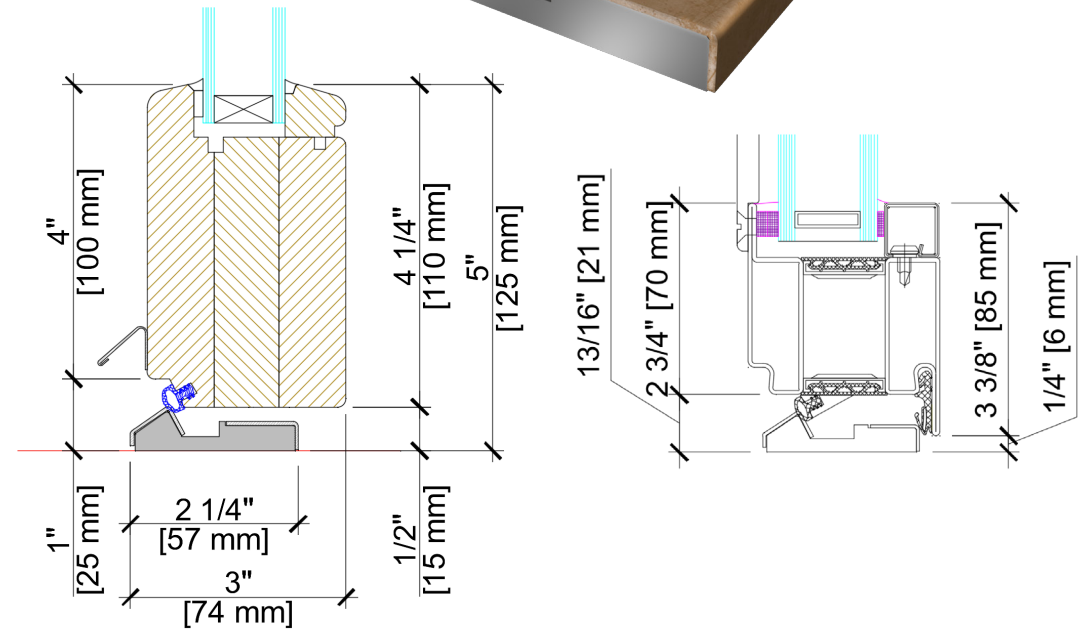
The thresholds provide excellent sealing, preventing the penetration of water and cold air into the room. This is important for maintaining a comfortable indoor climate.

### 2 Thermal Insulation

The thresholds of Secco steel systems are designed with the highest thermal insulation requirements in mind, helping to prevent heat loss through the bottom parts of doors and windows, improving the overall energy efficiency of the building.

### 4 Aesthetic Integration

The thresholds are integrated into the overall construction and design of the steel systems, ensuring their harmonious combination with other architectural elements.



## WOOD

**Wood** is an excellent material for entrance doors due to its natural beauty and warmth, which enhance any home's curb appeal. It offers superior insulation and soundproofing properties, contributing to energy efficiency and comfort. Additionally, wood is durable, customizable, and repairable, allowing for unique designs and easy maintenance. And it is also a sustainable and environmentally friendly choice.

## STEEL

**Steel** is a strong and durable material commonly used in construction and manufacturing due to its high tensile strength and versatility. It is also relatively cost-effective, making it a popular choice for a wide range of applications.

## STAINLESS STEEL

**Stainless steel** is an alloy of steel with a minimum of 10.5% chromium content, which provides excellent corrosion resistance. This makes it ideal for applications where hygiene and rust resistance are critical, such as outdoor structures. Stainless steel also has an attractive appearance and requires minimal maintenance.

## CORTEN STEEL

**Corten steel**, also known as weathering steel, is designed to form a stable rust-like appearance after exposure to weather, eliminating the need for painting. Its distinctive appearance and corrosion resistance make it a favorite for architectural projects and outdoor sculptures. Corten steel offers a unique aesthetic and long-term durability in harsh weather conditions.

## BRONZE

**Bronze** is an excellent material for entrance doors due to its exceptional durability and resistance to corrosion, ensuring longevity even in harsh environments. It has a distinctive, elegant appearance that develops a unique patina over time, adding character and sophistication. Additionally, bronze doors offer robust security and require minimal maintenance, combining aesthetic appeal with practical benefits.

## ALUMINUM

**Aluminum** is a top choice for entrance doors due to its strength and lightweight nature, providing excellent security without compromising ease of use. It is highly resistant to corrosion and weathering, making it ideal for various climates. Aluminum doors are also low maintenance, energy-efficient, and can be easily customized in terms of color and design, offering both durability and aesthetic flexibility.



Powder coating is a polyester-based coating method that uses consistently sized, dry polyester microbeads. The beads have an electrostatic charge that enables them to adhere to base materials. Powder coating creates a stronger, more durable and more resilient finish than paint and is useful on products that will need to stand up to harsh weather conditions or provide years of quality use.

### 1 **CORROSION RESISTANCE**

The powder coating creates a barrier to protect against many different types of corrosion, including rust. Many natural metals like steel rust over time with exposure to moisture and oxygen. Powder coating creates a protective barrier so the metal remains rust-free. Untreated aluminum does not rust, but it can oxidize to form a chalky-white substance in place of rust. Most metal parts designed for outdoor use have powder coatings to protect them from the elements and the resulting deterioration.

### 2 **COST-EFFECTIVENESS**

Another advantage of powder coating is its cost-effectiveness compared with other strengthening methods. Manufacturers can create strong products with specific, durable alloys, but those alloys tend to be costly. For instance, stainless steel is renowned for its strength and corrosion resistance but is expensive to produce and obtain. Using carbon steel and coating it with protective powder is a much more economical solution.

### 3 **ENVIRONMENTAL RESPONSIBILITY**

Powder coating is also relatively environmentally friendly. It contains almost no volatile organic compounds (VOCs) and no heavy metals like chrome.

### 4 **STRENGTH & DURABILITY**

The curing process makes powder coatings tough and durable. The finished coating will not peel or flake.

### 5 **VISUAL APPEAL**

Powder coating also imparts an aesthetically appealing finish to metal surfaces. It is useful on metal products, such as patio furniture or visible building components, because it gives them an elegant look.



**VEROMETAL** is a high-performance metallic coating system that combines metal particles with a binding agent, allowing it to be applied to various surfaces like wood, plastic, or metal. **VEROMETAL** can mimic the appearance of various metals such as bronze, copper, or aluminum, providing a cost-effective alternative to solid metal components. Its application versatility allows for customization of textures and finishes, enabling the creation of unique and aesthetically pleasing surfaces for architectural, interior design, and artistic projects.

This innovative material offers several advantages.

### 1 CORROSION RESISTANCE

VEROMETAL has an innate resistance to corrosion, offering protection against environmental factors such as moisture and oxidation. This corrosion resistance ensures the material maintains its integrity and appearance over time, even in harsh conditions.

### 2 EXCEPTIONAL DURABILITY

VEROMETAL boasts exceptional durability, ensuring longevity and robustness in various applications. Its resilient composition withstands wear and tear, making it ideal for high-traffic areas and environments prone to frequent use.

### 3 DESIGN VERSATILITY

With VEROMETAL, designers have unparalleled flexibility to unleash their creativity, thanks to its versatility. Whether replicating the look of bronze, copper, or other metals, or exploring custom textures and finishes, VEROMETAL enables the realization of diverse aesthetic visions across a wide range of surfaces and applications.





## CORTEN STEEL FINISHES

Weathering steel, often referred to by the generic trademark COR-TEN is a group of steel alloys which were developed to eliminate the need for painting, and form a stable rust-like appearance after several years' exposure to weather.

### 1 DURABILITY

Corten steel is highly durable and has a long lifespan due to its inherent resistance to atmospheric corrosion, making it ideal for outdoor applications.

### 2 LOW MAINTENANCE

The protective rust layer that forms on the surface of Corten steel means it requires little to no maintenance, unlike other types of steel that may need regular painting or treatment to prevent rust.

### 3 ENVIRONMENTAL BENEFITS

The natural weathering process of Corten steel means it does not require harmful coatings or paints, reducing environmental impact and contributing to sustainability.

### 4 STRUCTURAL STRENGTH

Corten steel retains high tensile strength and load-bearing capacity, making it suitable for structural applications where both strength and aesthetics are important.

### 5 VERSATILITY & AESTHETIC

It can be used in a wide range of applications, including building facades, bridges, sculptures, and outdoor furniture, thanks to its adaptability to different designs and environments.

**1 ADVANTAGES**

Utilizing standard handles offers several advantages that cater to practicality, accessibility, and cost-effectiveness. Firstly, standard handles are widely available and easily replaceable, simplifying maintenance and repair processes in both residential and commercial settings. Their straightforward design also contributes to a streamlined aesthetic, seamlessly integrating with various architectural styles and interior décors without overpowering the visual composition.



### 1 PREMIUM HANDLES

Premium handles are designed to complement upscale interiors, elevating the overall ambiance and adding a sense of refinement to the space.

### 2 HIGH QUALITY METALS

Crafted from high-quality metals such as brass, stainless steel, or titanium, these handles exude elegance and sophistication in any setting. Their ergonomic designs prioritize comfort and ease of use, ensuring a seamless interaction.

### 3 AESTHETICS

Investing in premium door handles not only enhances the aesthetics of the door but also adds value to the property, making it a worthwhile choice for those seeking to create a distinguished and elegant living environment.



ONE 10N  
minimal 10n



ATENE  
Q04/ minimal022



TOLEDO  
L14/minimal022



1926/8046



1926/8046



8112 KZS/868 R



8112 KZS/868 R



8027 NFH/657

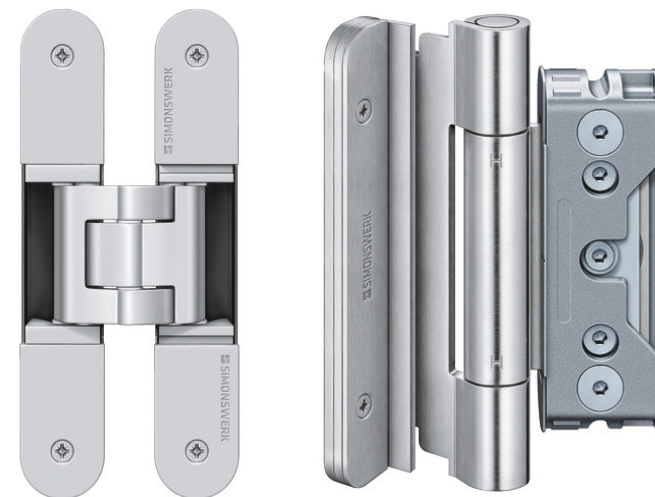


## 1 HINGES - F

Heavy duty external hinges, suitable for heavy entry doors, security doors, as well as fire-resistant doors.

## 2 HINGES - SM

Completely concealed hinge system  
 For timber, steel or aluminium frames  
 For unrebrated residential and heavy-duty doors  
 Sideways closed hinge body for a homogeneous mortise appearance  
 With comfortable 3D adjustment (side +/- 3,0 mm, height +/- 3,0 mm, compression +/- 1,0 mm)  
 maintenance-free slide bearings.



## 3 HINGES - S

Heavy duty regulating external hinges  
 Suitable to be installed on heavy doors, security doors, fire and smoke-proof doors, entrance doors.





## 1 ELECTRIC STRIKE

- Radius keep, FaFix®, adjustable by 3 mm
- Universal voltage
- Screw-in Terminal / plug-in connection
- Compatible with current mortise locks
- Compatible with available striking plates
- Symmetrical design. DIN left/right as well as horizontal applicable



## 2 FLUSH BOLT

- Automatic, for the passive door leaf in wooden, steel or aluminum double doors.  
Finish: Bright zinc-plated
- Accessories:
- Strike plate
  - Guide, for use in wooden doors when climate

## 3 SWING DOOR DRIVE

The electromechanical drive for swing doors is suitable for use on both exterior and interior doors made of aluminum, wood, and steel, with subsequent automation. It operates quietly and is used in barrier-free construction and areas with high noise level requirements. These drives are available with either a sliding rail or an arm.



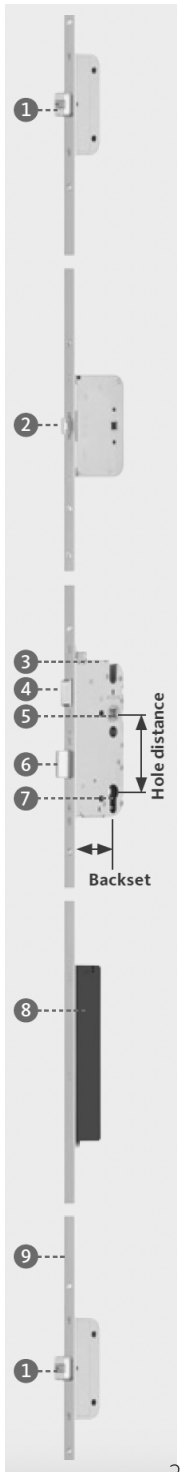
## 4 INDIVIDUAL SECURITY SYSTEMS FOR INDIVIDUAL DOOR SITUATIONS

Doors present special challenges with regard to burglar resistance, fire protection, impermeability and accessibility. Our multi-point locks tackle these challenges head on: with additional locking elements at the top and bottom area of the door and individual solutions for any installation situation – from manual versions for secondary entrance doors and automatic locking systems for main entrance doors through to multi-point locks with panic function for heavy-duty project doors. The products of the group provide tailor-made solutions for the entire range of applications.

- 1. Additional lock:** Version depends on locking system
- 2. Safe-T-catch (optional):** Built-in door catch mechanism, easily operated from the inside via thumbturn; can be released from the outside via cylinder
- 3. Lock case:** Fully enclosed for optimum protection of the interior functional components. With fixing holes for backplate or round rosette
- 4. Latch:** rh/lh reversible. Variant for fire protection doors available as an option
- 5. Follower:** Receives the square spindle of the lever handle without any play and provides for reliable lock operation. Variant for fire protection doors available as an option
- 6. Deadbolt:** 2-turn with a total deadbolt throw of 20 mm or 1-turn with 20 mm deadbolt throw, depending on the locking system
- 7. Cylinder hole:** For profile cylinder or round cylinder Ø 22 mm
- 8. A-opener and A-opener servo (optional):** Facilitates electric motor-driven opening of the door with the self-locking GU-SECURY multi-point locking systems
- 9. Faceplate:** ferGUard galvanised, painted or stainless steel
- 10. Additional lock:** Version depends on locking system

## 5 PUSHBAR

Pushbar for active door leaves with a 30° pivot angle.





## CONTACTS

### SHOWROOM

123 Coffey Street, Brooklyn, NY 11231

### WEBSITE

[openawd.com](http://openawd.com)

### EMAIL

[info@openawd.com](mailto:info@openawd.com)

### TELEPHONE

+1 718-403-0300



## OUR PARTNERS



STOP BUYING. START CREATING

### WEBSITE

[bronzeconnection.com](http://bronzeconnection.com)

### EMAIL

[info@bronzeconnection.com](mailto:info@bronzeconnection.com)

